



# In-Stock Kitchen Cabinetry Catalog and Product Specification Guide

**FULLY ASSEMBLED — READY TO INSTALL**

**Continental**  
CABINETS

# Table of Contents

Important Information and Standard Terms .....	3
Door Styles and Finishes .....	4-8
Model Number Guide .....	9
Product Specifications .....	10-11
Wall Cabinets .....	12
Wall Bridge Cabinets .....	13
Specialty Wall Cabinets .....	14
Base Cabinets .....	15
Sink Base Cabinets .....	16
Corner Base and Vanity Base Cabinets .....	17
Pantry and Double Oven Cabinets .....	18
Accessories .....	19-21
Wood Characteristics and Product Care .....	22
Warranty Information .....	23

American Woodmark Corporation reserves the right to discontinue the sale or change the specifications of any product at any time keeping within our philosophy of providing continuous improvement. Prices, terms and conditions of sale are subject to change without notice. Every effort was made to assure accuracy of the information contained herein at the time of issue, however, American Woodmark Corporation makes no representations to such accuracies.

# Important Information and Standard Terms

## Company Information

RSI Home Products  
(Subsidiary of American Woodmark Corporation)  
400 East Orangethorpe Avenue  
Anaheim, CA 92801

Payment Remittance:  
RSI Home Products  
PO Box 843322  
Los Angeles, CA 90084-3322

## Contact Information

Continental Cabinets - Customer Care  
Hours: Monday – Friday 9:00AM – 6:00PM EST  
Phone: (800) 229-5840 Fax: (714) 449-0893  
Email: ContinentalCustomerC@Woodmark.com

## Order Processing

Orders will ship to the customer within 10 business days from the date order is received excluding holidays. A longer lead time may apply.

Order entry cut-off times are as follows:

- Orders placed before 12:00 PM (EST) M-F will be recognized the same business day.
- Orders placed after 12:00 PM (EST) M-F will be recognized the next business day.
- Holidays are not included in the 10 day turn-around time.

## Freight Term Options

- FOB Destination, Freight Prepaid – Less Than Truckload (\$2,000 minimum)\*
  - FOB Destination, Freight Prepaid – Truckload (2,000 cubic feet minimum)\*
  - FOB Origin, Freight Collect - Less Than Truckload (\$1,500 minimum)
  - FOB Origin, Freight Collect - Truckload (2,000 cubic feet minimum)
- \*Destination in the Lower 48 U.S. states, no special handling services available.

## Defective Product Return Policy

Product returns are not acceptable.

If the dealer experiences a product damage and believes the damage is a manufacturing or product defect, please contact Continental Cabinets - Customer Care and provide details and supporting documentation relating to claim. If the Customer Care Representative determines the damage is a manufacturing or product defect, the Customer Care Representative will expedite claim resolution. If the Customer Care Representative cannot resolve the issue, a product claim will be submitted to request product credit in accordance with the Dealer's Defective Allowance Terms.

## 20-20 Design Catalogs

Please contact Continental Cabinets - Customer Care to request a link to download both Finished and Unfinished 20-20 Design Catalogs.

# Door Styles and Finishes

Hamilton  
Raised Panel



White RTF\*

Full Overlay



Medium Oak

Traditional Overlay



Café



Natural Hickory

Andover  
Shaker Flat Panel

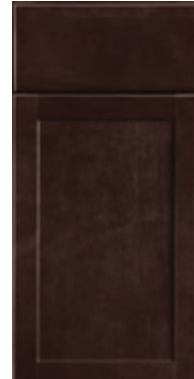


White RTF\*

Full Overlay



Pewter RTF\*



Java

Unfinished  
Flat Panel

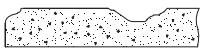
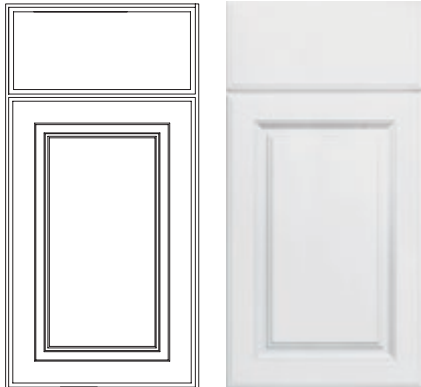


Beech - Ready to Stain or Paint

Traditional Overlay

\* RTF= Rigid Thermofoil on MDF

# Door Styles and Finishes



## Hamilton White RTF

Finish- White (SW)

Details

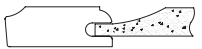
Rigid Thermofoil on MDF

Full Overlay

Raised Panel



Crisp and clean, the Hamilton White door style features a raised panel door with full overlay. With its durable and easy to clean thermofoil finish the Hamilton is perfect for a traditional style kitchen.



## Hamilton Oak

Finish- Oak (MO)

Details

Mortise and Tenon Construction

Traditional Overlay

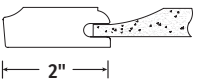
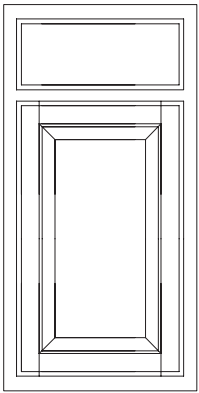
Raised Panel



Warm and inviting, the Hamilton Oak door style features a raised panel door with traditional overlay. You can't go wrong with this timeless style kitchen.



# Door Styles and Finishes



## Hamilton Café

Finish- Café (COG)

Details

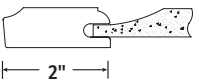
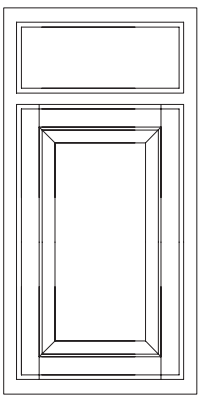
Mortise and Tenon Construction

Traditional Overlay

Raised Panel



Rich and refined, the Hamilton door style in the Café finish features a raised panel door with traditional overlay. Transform your kitchen into an ideal gathering spot for friends and family with this finish.



## Hamilton Hickory

Finish- Hickory (NHK)

Details

Mortise and Tenon Construction

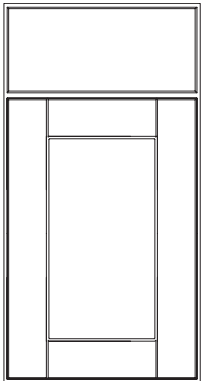
Traditional Overlay

Raised Panel



Rustic and timeless, the Hamilton door style in the Natural Hickory finish features a raised panel door with traditional overlay. Bring a fresh look to your kitchen with this finish.

# Door Styles and Finishes



3"

## Andover White RTF

Finish- White (SSW)

Details

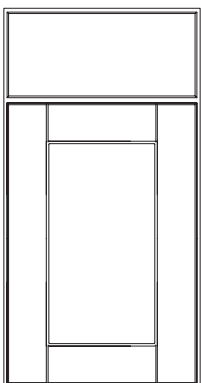
Rigid Thermofoil on MDF

Full Overlay

Shaker Flat Panel



Bright and versatile, the Andover door style in the White finish features a flat panel full overlay door. With its durable thermofoil finish and timeless shaker design, the Andover door style brings an uncluttered aesthetic to any kitchen.



3"

## Andover Pewter RTF

Finish- Pewter (SDV)

Details

Rigid Thermofoil on MDF

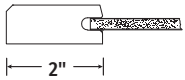
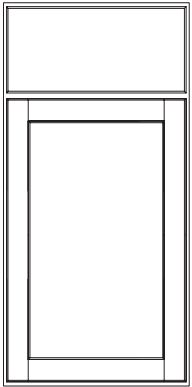
Full Overlay

Shaker Flat Panel



Clean and sophisticated, the Andover door style in the Pewter finish features a flat panel door with full overlay. This on-trend finish combined with the elegantly simple shaker style is a fitting solution for nearly any style of kitchen.

# Door Styles and Finishes



## Andover Java

Finish- Java (SJM)

### Details

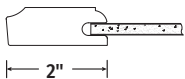
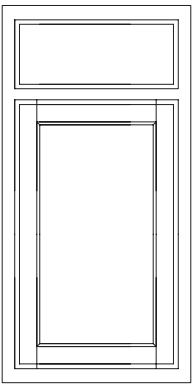
Mortise and Tenon Construction

Full Overlay

Shaker Flat Panel



Rich and welcoming, the Andover door style in the Java finish features a flat panel door with full overlay. From contemporary to transitional, this shaker style door is sure to make you feel at home.



## Unfinished Beech

Finish- Unfinished (UF)

### Details

Mortise and Tenon Construction

Traditional Overlay

Flat Panel

Ready to Stain or Paint



Let your imagination and creativity flow with the Unfinished Beech door style featuring a flat panel and traditional overlay. These quality cabinets come ready to paint or stain, create a custom look without the high price or wait!



# Model Number Guide

## FINISHED CABINETRY

Types of Cabinets	
W	Wall Cabinet
WFC	Wall Flex Cabinet
WD	Corner Wall Cabinet
WMS	Wall Flex Shelf
BF	Base Cabinet with Full Height Door
BW	Waste Bin Base Cabinet
B	Base Cabinet
DB	Drawer Base Cabinet
SB	Sink/Cooktop Base Cabinet
SBA	Accessible Sink Base
CSB	Corner Sink Base Cabinet
BBC	Blind Base Corner Cabinet
BLSN	Lazy Susan Corner Base Cabinet
P	Pantry Cabinet
DV	Double Oven Cabinet

Types of Accessories	
AREP	Refrigerator End Panel
AS	Wall/Base Flush End Panel
AIE	Island/Peninsula End Panel
AEP	Decorative Wall/Base End Panel
ADEP	Dishwasher End Panel
ADPK	Decorative Island Panel Kit
AFS	Filler
AUP	Universal Panels
ADWR	Base Pull-Out Drawer
ATK	Toe Kick Molding
AMT	Shoe Trim Molding
AMS	Scribe Molding
AMC4	Andover Crown Molding
AMC5	Hamilton Crown Molding
AMBS	Base Molding

Types of Accessories (cont.)	
AMDE	Decorative Edge Molding
AMSQ	Square Edge Molding
AOCM	Outside Corner Molding
ADCP6	Decorative Corner Post

Door Style and Finish	
SW	HAMILTON White RTF
MO	HAMILTON Oak
COG	HAMILTON Café
NHK	HAMILTON Hickory
SSW	ANDOVER Shaker White RTF
SDV	ANDOVER Shaker Pewter RTF
SJM	ANDOVER Shaker Java

## UNFINISHED CABINETRY

Types of Cabinets	
W	Wall Cabinet
WD	Corner Wall Cabinet
B	Base Cabinet
BF	Base Cabinet with Full Height Door
DB	Drawer Base Cabinet
SB	Sink/Cooktop Base Cabinet
SBA	Accessible Sink Base
CSB	Corner Sink Base
BLSN	Lazy Susan Corner Base Cabinet
BBC	Blind Base Cabinet
P	Pantry Cabinet
PDR	Drawer Pantry Cabinet

Types of Accessories	
ASKW	Wall Veneer End Panel
ASKB	Base Veneer End Panel
ASKP	Pantry Veneer End Panel
ADEP	Dishwasher End Panel
ATK	Toe Kick Molding
AMT	Shoe Trim Molding
AMS	Scribe Molding
AMC5	Crown Molding
AOCM	Outside Corner Molding
AFS	Filler
AOCM	Outside Corner Molding

Door Style and Finish	
UF	Flat Panel Unfinished

## EXAMPLES

KW1230-UF

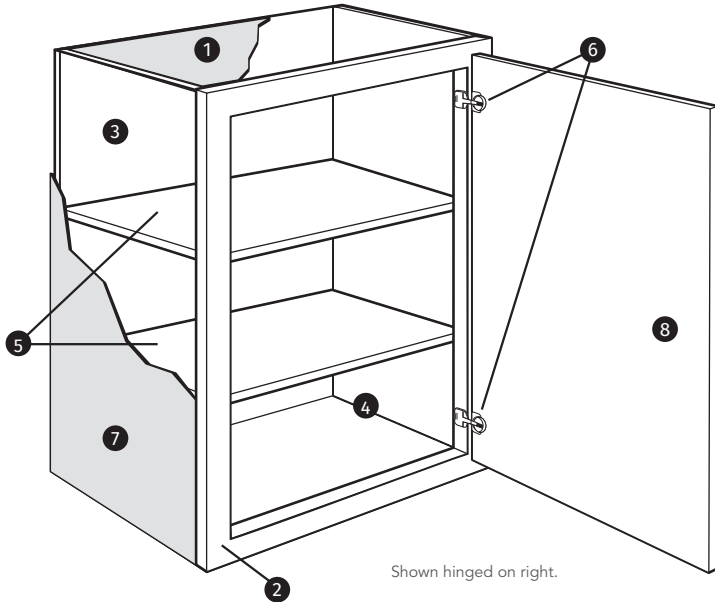
Type of Cabinet/ Accessory	Width (in.)	Height (in.)	Door Style and Finish
KW	12	30	UF

CBKW1230-COG

Continental Brand Kitchen	Type of Cabinet / Accessory	Width (in.)	Height (in.)	Door Style and Finish
CBK	W	12	30	COG

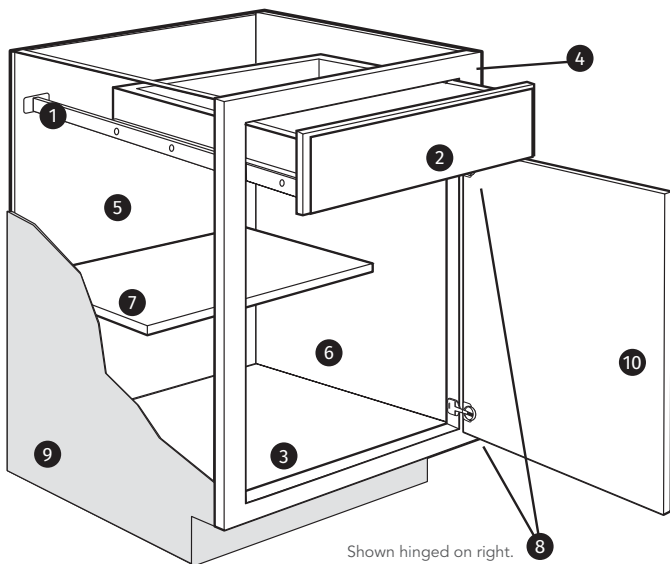
# Product Specifications

## Wall Cabinets



- 1 Top/Bottom Panels: 3/8" engineered wood fully encapsulated in the face frame, back and side panels. Exterior finished in a natural maple laminate.
- 2 Face Frame: Pocket screw construction with 3/4" thick, 1-1/2" wide material.
- 3 Back Panel: Full 3/8" back panel fully encapsulated into top and bottom panels for strength.
- 4 Interiors: Natural maple laminate finish on engineered wood.
- 5 Shelves: 3/4" thick adjustable shelves.
- 6 Hinges: Fully concealed and adjustable.
- 7 End Panels: Finished cabinetry – 1/2" engineered wood with laminated exterior to match cabinet finish; Unfinished cabinetry – 1/2" engineered wood with raw exterior.
- 8 Door: Reversible door on single-door cabinets for left or right opening. Hinged on the left from the factory. Double door cabinets are full-access, no center stile.

## Base Cabinets

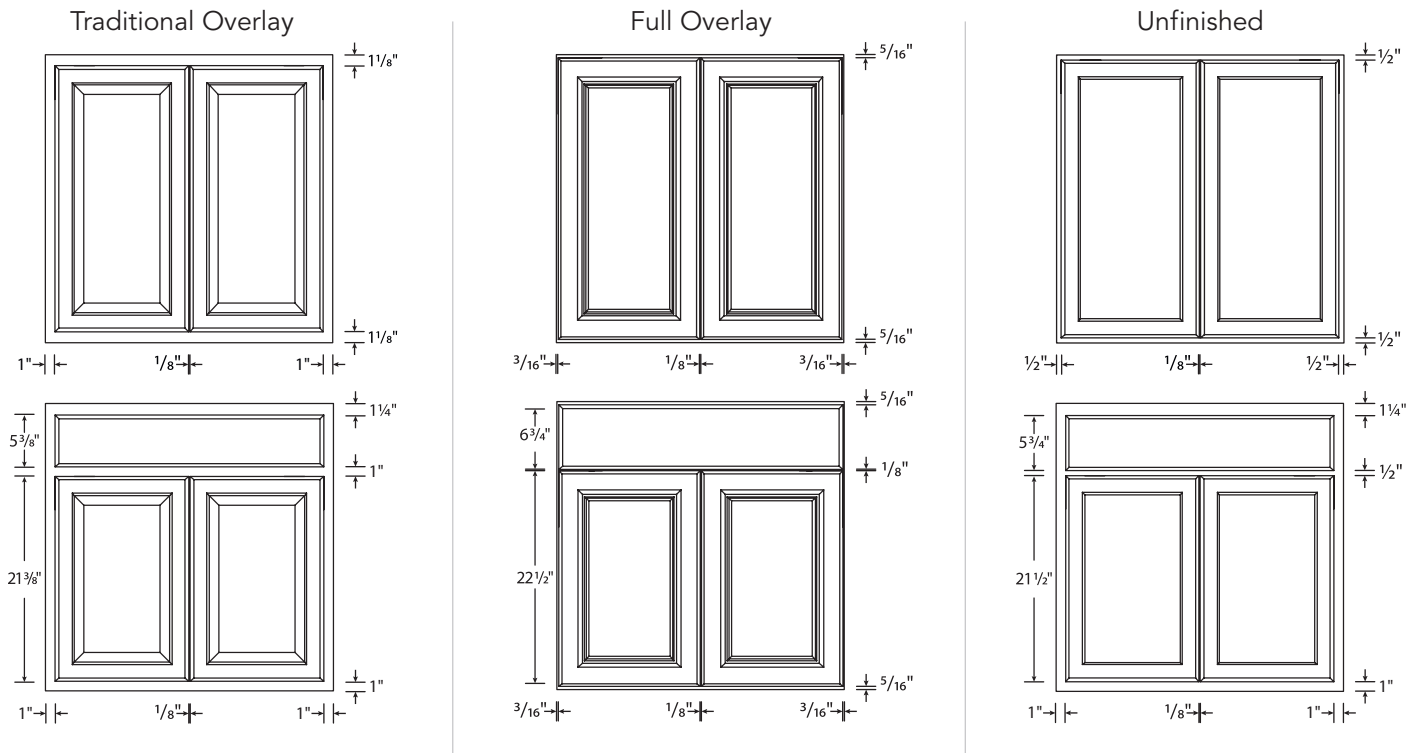


- 1 Drawer Glides: Finished cabinetry – Ball-Bearing. Unfinished cabinetry – Epoxy.
- 2 Drawer Box: Hardwood 4-sided drawer box with fully encapsulated bottom panel.
- 3 Bottom Panels: 3/8" engineered wood fully encapsulated in the face frame, back and side panels.
- 4 Face Frame: Pocket screw construction with 3/4" thick, 1-1/2" wide material.
- 5 Back Panel: Full 3/8" hardboard with a natural maple laminate interior. Sink Base cabinets must be cut for plumbing access.
- 6 Interiors: Natural maple laminate finish on engineered wood.
- 7 Shelf: 3/4" thick adjustable half-depth shelf.
- 8 Hinges: Fully concealed and adjustable.
- 9 End Panels: Finished cabinetry – 1/2" engineered wood with laminated exterior to match cabinet finish; Unfinished cabinetry – 1/2" engineered wood with raw exterior.
- 10 Door: Reversible door on single-door cabinets for left or right opening. Hinged on the left from the factory. Double door cabinets are full-access, no center stile.

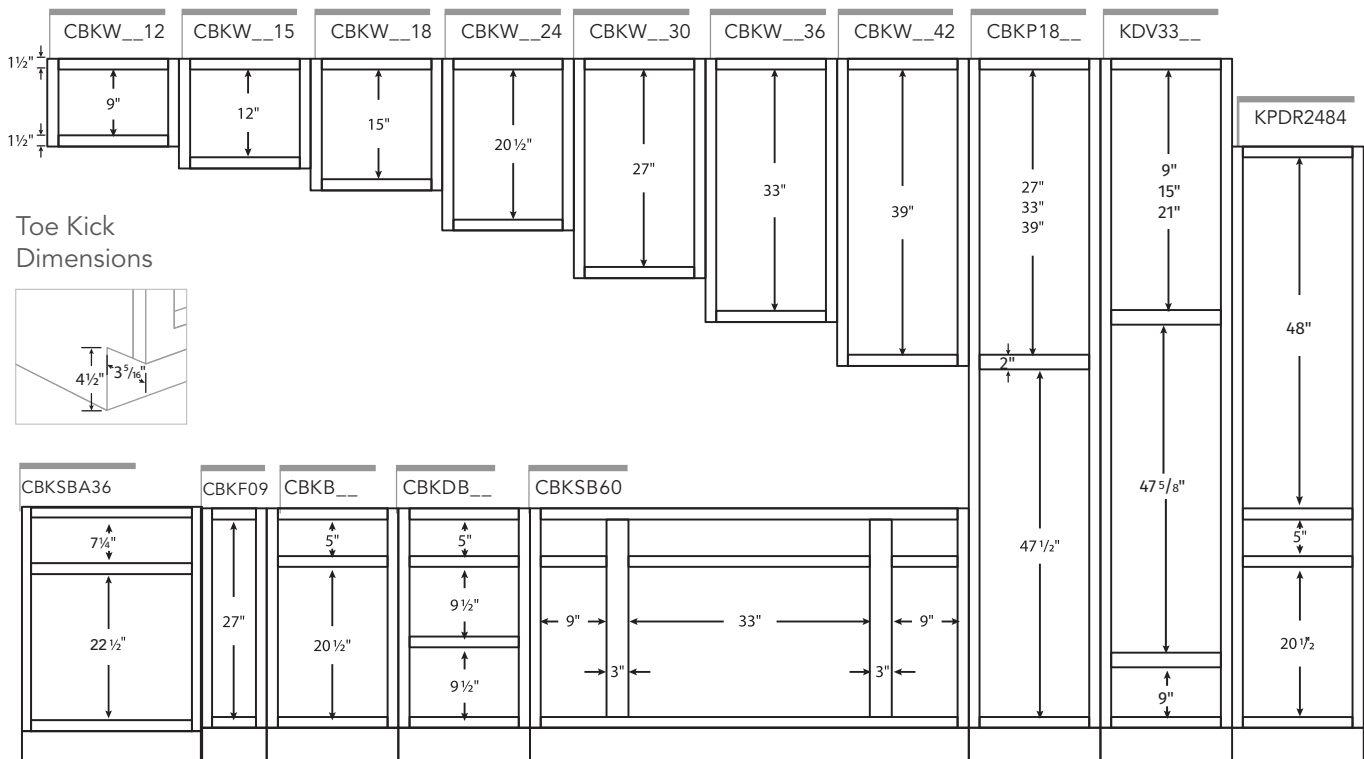
Finished Cabinetry	Unfinished Cabinetry	All Cabinetry
  	 	

# Product Specifications

## Overlays & Reveals



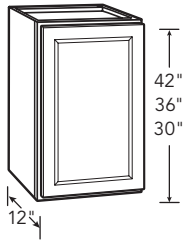
## Case Opening Dimensions



# Wall Cabinets

All prices shown are list prices

## 30", 36" & 42" High Wall Cabinet (Single Door)



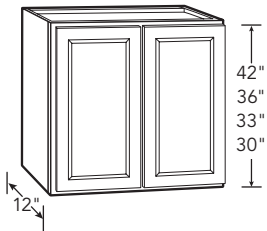
Model	Hamilton				Andover (Shaker)		
	White (SW)	Oak (MO)	Café (COG)	Hickory (NHK)	White (SSW)	Pewter (SDV)	Java (SJM)
CBKW930	185.00	185.00	228.00	232.00	193.00	206.00	248.00
CBKW1230	196.00	197.00	234.00	244.00	210.00	224.00	258.00
CBKW1530	212.00	212.00	251.00	262.00	225.00	240.00	278.00
CBKW1830	227.00	228.00	272.00	283.00	241.00	257.00	300.00
CBKW2130	245.00	246.00	296.00	309.00	256.00	273.00	325.00
CBKW2430	250.00	251.00	300.00	317.00	266.00	284.00	331.00
CBKW936	221.00	221.00	266.00	275.00	231.00	246.00	287.00
CBKW1236	242.00	244.00	287.00	294.00	254.00	271.00	312.00
CBKW1536	260.00	261.00	309.00	316.00	272.00	290.00	336.00
CBKW1836	280.00	281.00	335.00	342.00	293.00	312.00	362.00
CBKW2136	292.00	292.00	358.00	369.00	305.00	325.00	387.00
CBKW2436	308.00	309.00	370.00	388.00	321.00	342.00	400.00
CBKW1242	278.00	279.00	328.00	336.00	290.00	309.00	355.00
CBKW1542	297.00	298.00	354.00	361.00	311.00	332.00	384.00
CBKW1842	320.00	320.00	383.00	391.00	335.00	357.00	414.00
CBKW2142	339.00	329.00	399.00	409.00	333.00	369.00	429.00
CBKW2442	352.00	353.00	424.00	444.00	367.00	391.00	458.00

- Includes 2 adjustable shelves
- Reversible door for left or right hinging

Unfinished	
Model	
KW930-UF	111.00
KW1230-UF	122.00
KW1530-UF	135.00
KW1830-UF	146.00
KW2130-UF	171.00
KW2430-UF	214.00
KW936-UF	132.00
KW1236-UF	146.00
KW1536-UF	161.00
KW1836-UF	173.00
KW2136-UF	204.00
KW2436-UF	257.00

- Includes 1 adjustable shelf
- Reversible door for left or right hinging

## Wall Cabinet (Double Door)



Model	Hamilton				Andover (Shaker)		
	White (SW)	Oak (MO)	Café (COG)	Hickory (NHK)	White (SSW)	Pewter (SDV)	Java (SJM)
CBKW2730	318.00	321.00	388.00	405.00	338.00	360.00	426.00
CBKW3030	323.00	324.00	392.00	408.00	342.00	365.00	433.00
CBKW3330	369.00	399.00	409.00	429.00	359.00	419.00	449.00
CBKW3630	350.00	351.00	427.00	444.00	372.00	397.00	472.00
CBKW2736	394.00	395.00	477.00	492.00	411.00	438.00	517.00
CBKW3036	397.00	398.00	485.00	495.00	415.00	442.00	524.00
CBKW3336	469.00	499.00	499.00	519.00	459.00	479.00	521.00
CBKW3636	431.00	432.00	527.00	543.00	450.00	480.00	571.00
CBKW2742	449.00	449.00	539.00	549.00	459.00	479.00	569.00
CBKW3042	454.00	455.00	554.00	566.00	474.00	505.00	599.00
CBKW3342	519.00	549.00	540.00	569.00	499.00	509.00	595.00
CBKW3642	494.00	495.00	602.00	621.00	515.00	549.00	652.00

- Includes 2 adjustable shelves

Unfinished	
Model	
KW2730-UF	217.00
KW3030-UF	236.00
N/A	
KW3630-UF	282.00
KW2736-UF	259.00
KW3036-UF	284.00
N/A	
KW3636-UF	340.00

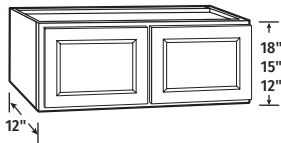
- Includes 2 adjustable shelves



# Wall Bridge Cabinets

All prices shown are list prices

12", 15" & 18"  
High Wall  
Bridge Cabinet



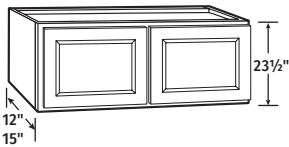
Model	Hamilton				Andover (Shaker)		
	White (SW)	Oak (MO)	Café (COG)	Hickory (NHK)	White (SSW)	Pewter (SDV)	Java (SJM)
CBKW3012	217.00	218.00	263.00	278.00	227.00	242.00	291.00
CBKW3612	230.00	230.00	273.00	282.00	240.00	256.00	296.00
CBKW3015	222.00	223.00	264.00	280.00	236.00	252.00	292.00
CBKW3615	236.00	237.00	282.00	297.00	251.00	268.00	313.00
CBKW3018	237.00	237.00	286.00	303.00	252.00	269.00	317.00
CBKW3618	271.00	278.00	341.00	354.00	300.00	320.00	362.00

• No shelves

Unfinished	
Model	
KW3012-UF	129.00
KW3612-UF	169.00
KW3015-UF	160.00
KW3615-UF	190.00
KW3018-UF	162.00
KW3618-UF	188.00

• No shelves

23½" High Wall  
Bridge Cabinet



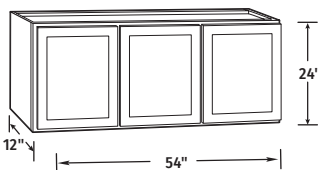
Model	Hamilton				Andover (Shaker)		
	White (SW)	Oak (MO)	Café (COG)	Hickory (NHK)	White (SSW)	Pewter (SDV)	Java (SJM)
CBKW3024	307.00	326.00	353.00	363.00	320.00	341.00	382.00
CBKW3624	334.00	334.00	425.00	441.00	347.00	370.00	464.00
CBKW302415*	314.00	332.00	360.00	371.00	327.00	349.00	391.00

• Includes 1 adjustable shelf  
\*CBKW302415 is 15" deep

Unfinished	
Model	
KW3024-UF	194.00
KW3624-UF	204.00
KW302415-UF*	208.00

• No adjustable shelf  
\* KW302415-UF is 15" deep

24" High Wall  
Bridge Cabinet

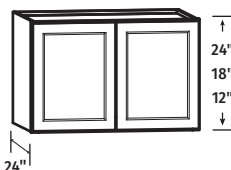


Model	Hamilton				Andover (Shaker)		
	White (SW)	Oak (MO)	Café (COG)	Hickory (NHK)	White (SSW)	Pewter (SDV)	Java (SJM)
N/A							

Unfinished	
Model	
KW5424-UF	301.00

• 1 large shelf

36" Wide Deep  
Bridge Cabinet



Model	Hamilton				Andover (Shaker)		
	White (SW)	Oak (MO)	Café (COG)	Hickory (NHK)	White (SSW)	Pewter (SDV)	Java (SJM)
CBKW361224	313.00	331.00	351.00	355.00	334.00	356.00	366.00
CBKW361824	375.00	385.00	398.00	413.00	378.00	403.00	413.00
CBKW362424	458.00	465.00	482.00	495.00	462.00	492.00	491.00

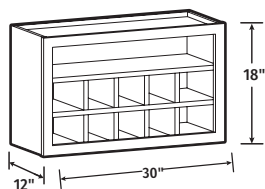
• Designed for use with Refrigerator End Panel  
• Must be attached to back wall and either cabinet or walls on both sides  
\*24" H model comes with one shelf

Unfinished	
Model	
N/A	

# Specialty Wall Cabinets

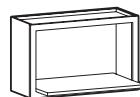
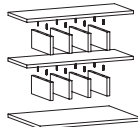
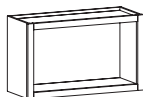
All prices shown are list prices

## 18" High Wall Flex Cabinet

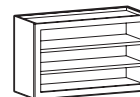


Hamilton					Andover (Shaker)		
Model	White (SW)	Oak (MO)	Café (COG)	Hickory (NHK)	White (SW)	Pewter (DV)	Java (JM)
CBKWFC3018	265.00	270.00	287.00	296.00	265.00	283.00	302.00

• Cabinet box is assembled, shelves are shipped loose



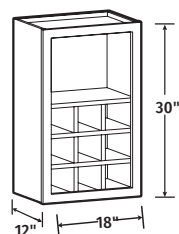
Microwave Shelf



Open Shelves

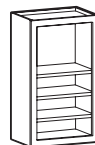
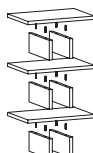
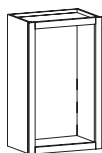
Unfinished	
Model	
N/A	

## 30" High Wall Flex Cabinet

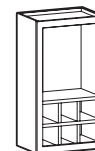


Hamilton					Andover (Shaker)		
Model	White (SW)	Oak (MO)	Café (COG)	Hickory (NHK)	White (SW)	Pewter (DV)	Java (JM)
CBKWFC1830	236.00	241.00	258.00	264.00	236.00	252.00	266.00

• Cabinet box is assembled, shelves are shipped loose



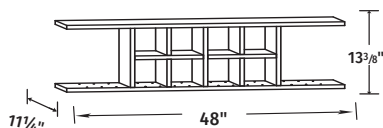
Open Shelves



Organizer Cubes

Unfinished	
Model	
N/A	

## 48" Wide Wall Flex Shelf

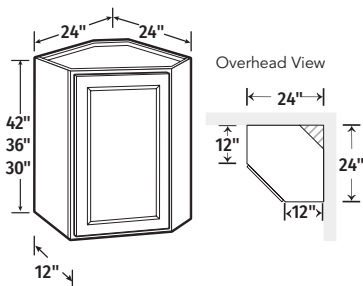


Hamilton					Andover (Shaker)		
Model	White (SW)	Oak (MO)	Café (COG)	Hickory (NHK)	White (SW)	Pewter (DV)	Java (JM)
KWMS4813	219.00	219.00	219.00	221.00	219.00	225.00	219.00

• Shelf box is assembled, shelves are shipped loose

Unfinished	
Model	
N/A	

## 24" Corner Wall Cabinet



Hamilton					Andover (Shaker)		
Model	White (SW)	Oak (MO)	Café (COG)	Hickory (NHK)	White (SSW)	Pewter (SDV)	Java (SJM)
CBKWD2430	353.00	358.00	415.00	432.00	375.00	400.00	458.00
CBKWD2436	434.00	440.00	511.00	524.00	454.00	484.00	554.00
CBKWD2442	497.00	504.00	585.00	600.00	519.00	553.00	633.00

- Installs in a 24" x 24" wall area
- 30" includes 1 adjustable shelf
- 36" and 42" include 2 adjustable shelves
- Reversible door for left or right hinging

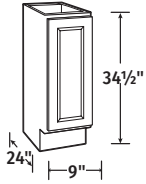
Unfinished	
Model	
KWD2430-UF	267.00
KWD2436-UF	321.00

- Installs in a 24" x 24" wall area
- Includes 1 adjustable shelf
- Reversible door for left or right hinging

# Base Cabinets

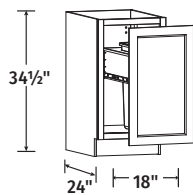
All prices shown are list prices

Base (Full-Height Door)



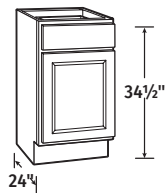
Hamilton				Andover (Shaker)			Unfinished	
Model	White (SW)	Oak (MO)	Café (COG)	Hickory (NHK)	White (SSW)	Pewter (SDV)	Java (SJM)	Model
CBKBF09	260.00	261.00	292.00	301.00	272.00	290.00	316.00	KBF09-UF
<ul style="list-style-type: none"> <li>One, half-depth adjustable shelf included</li> <li>Reversible door for left or right hinging</li> </ul>								158.00
								<ul style="list-style-type: none"> <li>One, half-depth adjustable shelf included</li> </ul>

Waste Bin Base



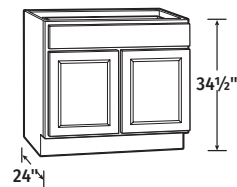
Hamilton				Andover (Shaker)			Unfinished	
Model	White (SW)	Oak (MO)	Café (COG)	Hickory (NHK)	White (SSW)	Pewter (SDV)	Java (SJM)	Model
CBKBW18	492.00	503.00	555.00	562.00	525.00	559.00	586.00	N/A
<ul style="list-style-type: none"> <li>Includes a 12 gallon trash can</li> <li>Heavy duty ball-bearing drawer glides</li> </ul>								

Base (Single Door)



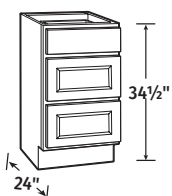
Hamilton				Andover (Shaker)			Unfinished	
Model	White (SW)	Oak (MO)	Café (COG)	Hickory (NHK)	White (SSW)	Pewter (SDV)	Java (SJM)	Model
CBKB12	270.00	271.00	315.00	328.00	287.00	306.00	349.00	KB12-UF
CBKB15	291.00	291.00	343.00	359.00	309.00	329.00	380.00	KB15-UF
CBKB18	306.00	309.00	366.00	382.00	326.00	348.00	404.00	KB18-UF
CBKB21	338.00	339.00	406.00	419.00	355.00	378.00	445.00	KB21-UF
CBKB24	342.00	346.00	408.00	425.00	364.00	388.00	450.00	KB24-UF
<ul style="list-style-type: none"> <li>Ball-bearing drawer glides</li> <li>One, half-depth adjustable shelf included</li> <li>Reversible door for left or right hinging – ships left hinge</li> </ul>								<ul style="list-style-type: none"> <li>Epoxy drawer glides</li> <li>One, half-depth adjustable shelf included</li> </ul>

Base (Double Door)



Hamilton				Andover (Shaker)			Unfinished	
Model	White (SW)	Oak (MO)	Café (COG)	Hickory (NHK)	White (SSW)	Pewter (SDV)	Java (SJM)	Model
CBKB27	415.00	416.00	500.00	510.00	437.00	466.00	545.00	KB27-UF
CBKB30	418.00	419.00	505.00	526.00	443.00	472.00	554.00	KB30-UF
CBKB33	469.00	519.00	529.00	549.00	463.00	492.00	579.00	N/A
CBKB36	454.00	455.00	552.00	575.00	482.00	514.00	607.00	KB36-UF
<ul style="list-style-type: none"> <li>Ball-bearing drawer glides</li> <li>One, half-depth adjustable shelf included</li> </ul>								<ul style="list-style-type: none"> <li>Epoxy drawer glides</li> <li>One, half-depth adjustable shelf included</li> </ul>

Drawer Base

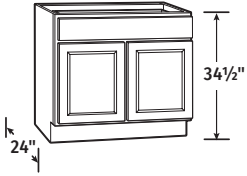


Hamilton				Andover (Shaker)			Unfinished	
Model	White (SW)	Oak (MO)	Café (COG)	Hickory (NHK)	White (SSW)	Pewter (SDV)	Java (SJM)	Model
CBKDB18	439.00	444.00	519.00	540.00	479.00	510.00	587.00	KDB18-UF
CBKDB24	616.00	617.00	688.00	709.00	652.00	695.00	755.00	KDB24-UF
CBKDB30	708.00	728.00	789.00	823.00	775.00	826.00	852.00	
CBKDB36	843.00	859.00	938.00	979.00	931.00	992.00	990.00	
<ul style="list-style-type: none"> <li>18" and 24" include ball-bearing drawer glides</li> <li>30" and 36" include full extension heavy duty drawer glides, on all three drawers, ideal for pots and pans</li> </ul>								<ul style="list-style-type: none"> <li>Epoxy drawer glides</li> </ul>

# Sink Base Cabinets

All prices shown are list prices

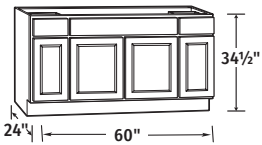
## Sink/Cooktop Base



Hamilton					Andover (Shaker)		
Model	White (SW)	Oak (MO)	Café (COG)	Hickory (NHK)	White (SSW)	Pewter (SDV)	Java (SJM)
CBKSB30	317.00	337.00	425.00	436.00	360.00	384.00	477.00
CBKSB36	376.00	376.00	462.00	481.00	400.00	426.00	509.00

Unfinished	
Model	
KSB30-UF	278.00
KSB36-UF	284.00

## Sink/Cooktop Base

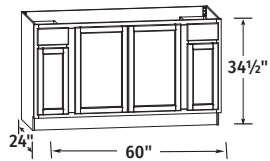


Hamilton					Andover (Shaker)		
Model	White (SW)	Oak (MO)	Café (COG)	Hickory (NHK)	White (SSW)	Pewter (SDV)	Java (SJM)
CBKSB60	N/A	N/A	N/A		N/A		

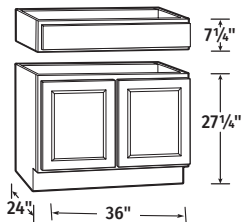
• Ball-bearing drawer glides

Unfinished Oak	
Model	
KSBF60-UF	460.00

• Epoxy drawer glides



## 36" Accessible Sink Base Cabinet

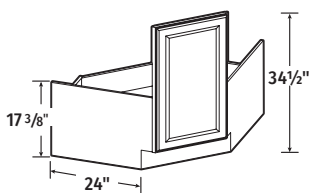


Hamilton					Andover (Shaker)		
Model	White (SW)	Oak (MO)	Café (COG)	Hickory (NHK)	White (SSW)	Pewter (SDV)	Java (SJM)
CBKSBA36	503.00	503.00	540.00	558.00	535.00	570.00	570.00

• Exterior side panels are finished in a natural maple laminate

Unfinished	
Model	
KSBA36-UF	432.00

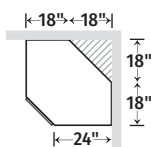
## 36" Corner Sink Base Cabinet



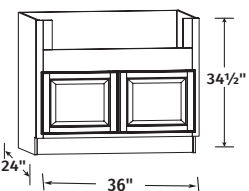
Hamilton					Andover (Shaker)		
Model	White (SW)	Oak (MO)	Café (COG)	Hickory (NHK)	White (SSW)	Pewter (SDV)	Java (SJM)
KCSB36	305.00	312.00	330.00	341.00	323.00	344.00	362.00

• Ready to assemble  
• Installs in a 36" x 36" wall area  
• Exterior side panels are finished in a natural maple laminate

Unfinished	
Model	
KCSB36-UF	243.00



## 36" "Farmhouse" Apron Sink Base Cabinet



Hamilton					Andover (Shaker)		
Model	White (SW)	Oak (MO)	Café (COG)	Hickory (NHK)	White (SSW)	Pewter (SDV)	Java (SJM)
KSBD36	545.00	553.00	589.00	573.00	597.00	634.00	605.00

• 2" side stiles and 4" rail are trimmable to accommodate various size apron front sinks and cooktops  
• 29"W opening for sinks can be trimmed to 33"W  
• 7 1/2"H trimmable to 11"H  
• Can accommodate smaller sizes with use of 3" or 6" filler

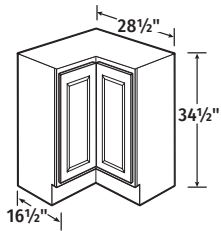
Unfinished	
Model	
N/A	



# Corner Base Cabinets and Vanity Base Cabinets

All prices shown are list prices

## 36" Corner Base with Lazy Susan

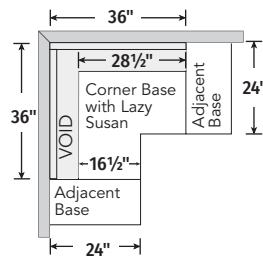


Requires cleats to be installed in the corner to support the countertop

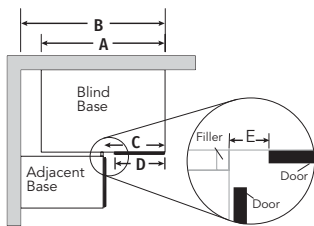
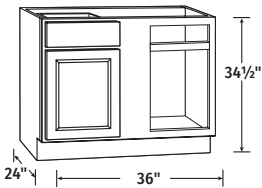
Hamilton					Andover (Shaker)			Unfinished	
Model	White (SW)	Oak (MO)	Café (COG)	Hickory (NHK)	White (SSW)	Pewter (SDV)	Java (SJM)	Model	
CBKBLS36	573.00	575.00	656.00	682.00	602.00	641.00	716.00	KBLSN36-UF	575.00
<ul style="list-style-type: none"><li>• Installs in a 36" x 36" wall area</li><li>• Two-piece overlay door hinged together in the middle</li><li>• Two 360° independently rotating metal racks</li><li>• Exterior side panels are finished in a natural maple laminate</li></ul>								<ul style="list-style-type: none"><li>• Fixed traveling door rotates inside of cabinet</li><li>• Two metal racks</li></ul>	

- Installs in a 36" x 36" wall area
- Two-piece overlay door hinged together in the middle
- Two 360° independently rotating metal racks
- Exterior side panels are finished in a natural maple laminate

- Fixed traveling door rotates inside of cabinet
- Two metal racks



## 36" Blind Corner Base Cabinet



Hamilton					Andover (Shaker)			Unfinished	
Model	White (SW)	Oak (MO)	Café (COG)	Hickory (NHK)	White (SSW)	Pewter (SDV)	Java (SJM)	Model	
CBKBBC45	371.00	374.00	437.00	463.00	412.00	439.00	499.00	KBBC45-UF	305.00
<ul style="list-style-type: none"><li>• Ball-bearing drawer glides</li><li>• Door and drawer are reversible to accomodate leftor right blind</li><li>• One, half-depth adjustable shelf included</li></ul>								<ul style="list-style-type: none"><li>• Epoxy drawer glides</li></ul>	

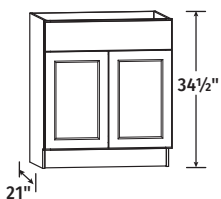
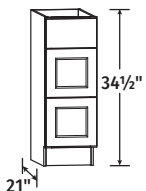
- Ball-bearing drawer glides
- Door and drawer are reversible to accommodate left or right blind
- One, half-depth adjustable shelf included

- Epoxy drawer glides

Overlay	A	B	C	D	E	Max B	Min B
Traditional Overlay	36"	42"	18"	13"	4"	46 1/2"	39 1/4"
Full Overlay	36"	42"	18"	14 3/4"	3 1/8"	46 1/2"	40 1/8"
Unfinished	36"	42"	18"	14"	3 1/2"	46 1/2"	39 3/4"

- Dimensions C & E only apply when cabinet is pulled to 42"

## Vanity Base Cabinets



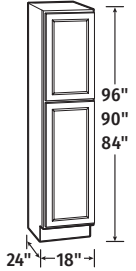
Hamilton					Andover (Shaker)			Unfinished	
Model	White (SW)	Oak (MO)	Café (COG)	Hickory (NHK)	White (SSW)	Pewter (SDV)	Java (SJM)	Model	
KVDB12	365.00	365.00	394.00	404.00	378.00	403.00	430.00	N/A	
KVDB15	399.00	399.00	452.00	459.00	409.00	439.00	489.00		
KVSB24	290.00	335.00	390.00	409.00	325.00	347.00	412.00		
KVSB27	309.00	341.00	409.00	429.00	329.00	351.00	449.00		
KVSB30	325.00	345.00	436.00	459.00	333.00	355.00	480.00		
KVSB33	352.00	395.00	446.00	469.00	359.00	375.00	499.00		
KVSB36	360.00	375.00	458.00	478.00	379.00	404.00	515.00		
<ul style="list-style-type: none"><li>• KVSB24, KVSB27, KVSB30, KVSB33 and KVSB36 - Vanity sink bases are doors only</li><li>• KVDB12 &amp; KVDB15 includes three drawers. If required for top drawer, 4 “L” brackets and 8 screws are provided to reattach the drawer to create a false drawer front.</li></ul>									

- KVSB24, KVSB27, KVSB30, KVSB33 and KVSB36 - Vanity sink bases are doors only
- KVDB12 & KVDB15 includes three drawers. If required for top drawer, 4 "L" brackets and 8 screws are provided to reattach the drawer to create a false drawer front.

# Pantry and Double Oven Cabinets

All prices shown are list prices

## 18" Pantry



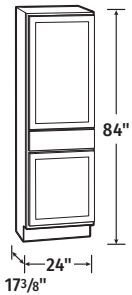
Hamilton					Andover (Shaker)		
Model	White (SW)	Oak (MO)	Café (COG)	Hickory (NHK)	White (SSW)	Pewter (SDV)	Java (SJM)
CBKP1884	627.00	629.00	732.00	761.00	666.00	710.00	809.00
CBKP1890	823.00	825.00	912.00	932.00	858.00	914.00	985.00
CBKP1896	921.00	922.00	989.00	1008.00	960.00	1023.00	1069.00

- 84" and 90" includes 3 adjustable shelves
- 96" includes 4 adjustable shelves
- Minor assembly of toe kick is required on 96" pantry
- Upper door lines up with 30", 36" and 42" high wall cabinets
- Reversible door for left or right hinging

Unfinished	
Model	
KP1884-UF	512.00
KP1890-UF	621.00

- Includes 2 adjustable shelves
- Upper door lines up with 30", 36" and 42" high wall cabinets
- Reversible door for left or right hinging

## 24" Drawer Pantry

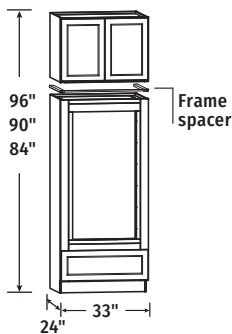


Hamilton					Andover (Shaker)		
Model	White (SW)	Oak (MO)	Café (COG)	Hickory (NHK)	White (SSW)	Pewter (SDV)	Java (SJM)
N/A							

Unfinished	
Model	
KPDR2484-UF	482.00

- Epoxy drawer glides
- Includes 2 adjustable shelves
- Reversible door for left or right hinging

## Double Oven Cabinet



Hamilton					Andover (Shaker)		
Model	White (SW)	Oak (MO)	Café (COG)	Hickory (NHK)	White (SSW)	Pewter (SDV)	Java (SJM)
KDV3384	1,016.00	1,020.00	1,174.00	1,177.00	1,002.00	1,067.00	1,194.00
KDV3390	1,069.00	1,080.00	1,237.00	1,239.00	1,092.00	1,163.00	1,259.00
KDV3396	1,202.00	1,205.00	1,395.00	1,403.00	1,216.00	1,295.00	1,418.00

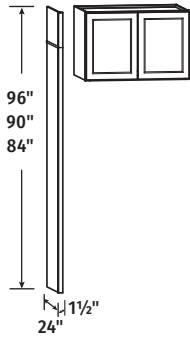
- Includes drawer with full extension heavy duty drawer glides
- Includes 24" Deep Bridge Cabinet
- Overhead Bridge Cabinet is not pre-installed to oven cabinet, comes as two pieces, boxed separately
- Rails and stiles around oven opening are trimmable
- Cut-out dimensions: W: 24" minimum, 30" maximum\*, H: 47 3/8" minimum, 52 1/8" maximum
- \*Can accommodate smaller sizes with use of 3" and 6" filler
- Frame spacer included in KDV3396 only; 96"H double oven overhead bridge cabinet is 23 1/2" H

Unfinished	
Model	
N/A	

# Accessories

All prices shown are list prices

## 24" Refrigerator End Panel Kit

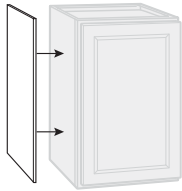


Hamilton					Andover (Shaker)		
Model	White (SW)	Oak (MO)	Café (COG)	Hickory (NHK)	White (SSW)	Pewter (DV)	Java (SJM)
KAREP	210.00	214.00	248.00	256.00	210.00	224.00	263.00

- 84"H panel kit includes 2 additional panels that extend reach to heights of 90"H and 96"H
- Will require cleat material to fasten to the wall
- Reversible for left and right application

Unfinished	
Model	
N/A	

## Wall & Base Flush Fit End Panel



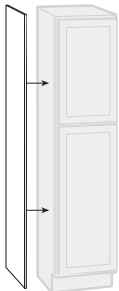
Hamilton					Andover (Shaker)		
Model	White (SW)	Oak (MO)	Café (COG)	Hickory (NHK)	White (SW)	Pewter (DV)	Java (JM)
CBKAS1230 (2/Pack)	46.00	46.00	50.00	53.00	46.00	48.00	54.00
CBKAS1236 (2/Pack)	52.00	52.00	65.00	88.00	52.00	53.00	69.00
CBKAS1242 (2/Pack)	56.00	57.00	79.00	98.00	56.00	58.00	83.00
CBKAS2435 (2/Pack)	90.00	90.00	98.00	103.00	90.00	93.00	106.00
CBKAIE4835X (Single)	184.00	185.00	204.00	255.00	184.00	189.00	216.00

- Finished veneer panels fit flush. White panels are laminate
- Wall panels are 11 1/4"W
- Base panels are 23 1/4"W x 34 1/2"H
- Island/Peninsula panel is 48"W x 34 1/2"H

Unfinished	
Model	
KASKW30-UF	11.00
KASKW36-UF	24.00
N/A	
KASKB35-UF	25.00

- 1/8" thick veneer panels

## Pantry End Panel

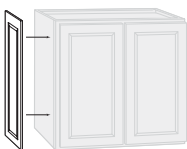


Hamilton					Andover (Shaker)		
Model	White (SW)	Oak (MO)	Café (COG)	Hickory (NHK)	White (SSW)	Pewter (DV)	Java (SJM)
N/A							

Unfinished	
Model	
KASKP84-UF	69.00
KASKP90-UF	78.00

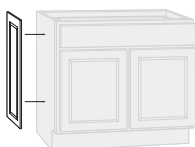
- 1/8" thick veneer panels

## Decorative End Panel



Hamilton					Andover (Shaker)		
Model	White (SW)	Oak (MO)	Café (COG)	Hickory (NHK)	White (SSW)	Pewter (SDV)	Java (SJM)
CBKAEP1230	71.00	71.00	81.00	83.00	76.00	81.00	89.00
CBKAEP1236	80.00	80.00	94.00	97.00	83.00	89.00	102.00
CBKAEP1242	88.00	88.00	103.00	106.00	93.00	100.00	112.00
CBKAEP2430	111.00	111.00	129.00	133.00	116.00	124.00	140.00

Unfinished	
Model	
N/A	

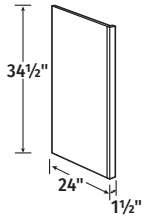


Wall Cabinet	Width	Height			Base Cabinet	Width	Height
		CBKAEP1230	CBKAEP1236	CBKAEP1242	CBKAEP2430		
Traditional Overlay	10"	27 3/4"	33 3/4"	39 3/4"	Traditional Overlay	22"	27 3/4"
Full Overlay	11"	29 3/8"	35 1/4"	41 1/4"	Full Overlay	23"	29 3/8"

# Accessories

All prices shown are list prices

## Dishwasher End Panel



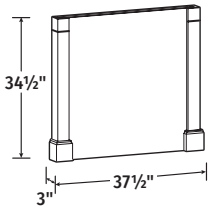
Hamilton					Andover (Shaker)		
Model	White (SW)	Oak (MO)	Café (COG)	Hickory (NHK)	White (SW)	Pewter (DV)	Java (JM)
CBKADEP	90.00	91.00	98.00	106.00	90.00	93.00	104.00

- Will require cleat material to fasten to the wall
- Reversible for left and right application

Unfinished	
Model	
KADEP-UF	65.00

- Will require cleat material to fasten to the wall
- Reversible for left and right application
- Veneer finished on outside of panel

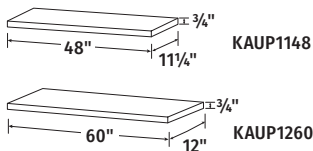
## Decorative Island Panel Kit



Hamilton					Andover (Shaker)		
Model	White (SW)	Oak (MO)	Café (COG)	Hickory (NHK)	White (SW)	Pewter (DV)	Java (JM)
KADPK337	384.00	392.00	415.00	430.00	384.00	409.00	437.00

Unfinished	
Model	
N/A	

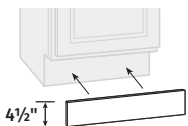
## Universal Panels



Hamilton					Andover (Shaker)		
Model	White (SW)	Oak (MO)	Café (COG)	Hickory (NHK)	White (SW)	Pewter (DV)	Java (JM)
KAUP1148	44.00	45.00	48.00	49.00	44.00	47.00	50.00
KAUP1260	60.00	61.00	66.00	68.00	60.00	64.00	69.00

Unfinished	
Model	
N/A	

## 91 1/2" Toe Kick Molding

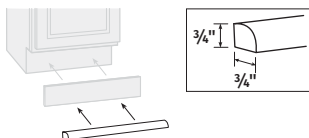


Hamilton					Andover (Shaker)		
Model	White (SW)	Oak (MO)	Café (COG)	Hickory (NHK)	White (SW)	Pewter (DV)	Java (JM)
KATKX (Single)	34.00	37.00	45.00	46.00	34.00	37.00	52.00
KATK (Masterpack)	24.00	27.00	35.00	35.00	24.00	34.00	44.00

- Masterpack contains 5 pieces. List price is a price for each unit.

Unfinished	
Model	
KATKX-UF (Single)	12.00

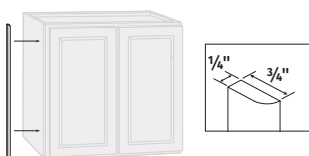
## 91 1/2" Shoe Trim Molding



Hamilton					Andover (Shaker)		
Model	White (SW)	Oak (MO)	Café (COG)	Hickory (NHK)	White (SW)	Pewter (DV)	Java (JM)
KAMTX (Single)	42.00	37.00	45.00	46.00	42.00	45.00	48.00

Unfinished	
Model	
KAMTX-UF (Single)	25.00

## 91 1/2" Scribe Molding



Hamilton					Andover (Shaker)		
Model	White (SW)	Oak (MO)	Café (COG)	Hickory (NHK)	White (SW)	Pewter (DV)	Java (JM)
KAMTX (Single)	34.00	34.00	43.00	43.00	34.00	37.00	45.00
KAMS (Masterpack)	24.00	24.00	33.00	33.00	24.00	34.00	37.00

- Masterpack contains 12 pieces. List price is a price for each unit.

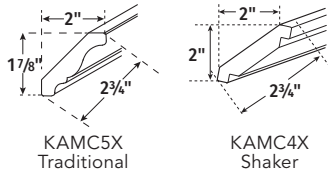
Unfinished	
Model	
KAMTX-UF (Single)	23.00



# Accessories

All prices shown are list prices

## 91½" Crown Molding

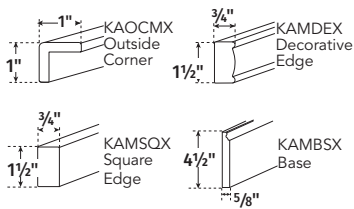


Hamilton					Andover (Shaker)		
Model	White (SW)	Oak (MO)	Café (COG)	Hickory (NHK)	White (SW)	Pewter (DV)	Java (JM)
KAMC5X (Single)	70.00	75.00	98.00	100.00	N/A		
KAMC5 (Masterpack)	60.00	66.00	89.00	90.00			
KAMC4X (Single)	N/A				84.00	90.00	125.00
KAMC4 (Masterpack)					76.00	81.00	122.00

• Masterpack contains 6 pieces. List price is a price for each unit.

Unfinished	
Model	
KAMC5X-UF (Single)	53.00

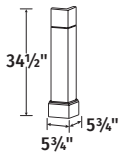
## 91½" Molding



Hamilton					Andover (Shaker)		
Model	White (SW)	Oak (MO)	Café (COG)	Hickory (NHK)	White (SW)	Pewter (DV)	Java (JM)
KAMSQX	76.00	77.00	82.00	84.00	76.00	81.00	86.00
KAMBSX	98.00	100.00	106.00	110.00	98.00	105.00	111.00
KAOCMX	60.00	62.00	78.00	81.00	60.00	64.00	84.00
KAMDEX	76.00	77.00	82.00	84.00	N/A	81.00	N/A

Unfinished	
Model	
KAOCMX-UF (Single)	36.00

## Decorative Corner Post

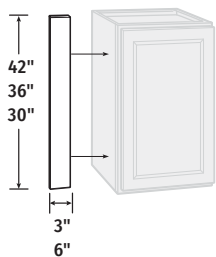


Hamilton					Andover (Shaker)		
Model	White (SW)	Oak (MO)	Café (COG)	Hickory (NHK)	White (SW)	Pewter (DV)	Java (JM)
KADCP6	163.00	166.00	177.00	183.00	163.00	174.00	186.00

• Base profile matches KAMBSX base molding

Unfinished	
Model	
N/A	

## Wall & Base Fillers

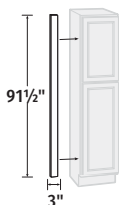


Hamilton					Andover (Shaker)		
Model	White (SW)	Oak (MO)	Café (COG)	Hickory (NHK)	White (SW)	Pewter (DV)	Java (JM)
KAFS330X (Single)	24.00	27.00	36.00	38.00	24.00	26.00	38.00
KAFS330 (Masterpack)	19.00	20.00	31.00	32.00	19.00	24.00	35.00
KAFS336X (Single)	38.00	38.00	46.00	47.00	38.00	41.00	49.00
KAFS342X (Single)	50.00	50.00	56.00	57.00	50.00	54.00	59.00
KAFS630X (Single)	58.00	58.00	69.00	71.00	58.00	62.00	74.00
KAFS636X (Single)	64.00	64.00	75.00	77.00	64.00	69.00	79.00
KAFS642X (Single)	69.00	69.00	83.00	86.00	69.00	74.00	89.00

• Masterpack contains 5 pieces. List price is a price for each unit.

Unfinished	
Model	
KAFS330X-UF (Single)	15.00
N/A	
KAFS336X-UF (Single)	26.00
N/A	
KAFS630X-UF (Single)	36.00
KAFS636X-UF (Single)	41.00

## 91½" Pantry Filler

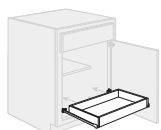


Hamilton					Andover (Shaker)		
Model	White (SW)	Oak (MO)	Café (COG)	Hickory (NHK)	White (SW)	Pewter (DV)	Java (JM)
KAFS396X (Single)	59.00	60.00	95.00	108.00	59.00	63.00	100.00
KAFS396 (Masterpack)	50.00	50.00	87.00	100.00	50.00	60.00	94.00

• Masterpack contains 5 pieces. List price is a price for each unit.

Unfinished	
Model	
KAFS396X-UF (Single)	43.00

## Pull Out Drawer



Model	N/A	<ul style="list-style-type: none"> <li>• Ball-bearing drawer glides</li> <li>• CBKADWR24 fits in 24" W Base</li> <li>• CBKADWR30 fits in 30" W Base</li> <li>• Ready to assemble</li> <li>* Maximum of 2 per Cabinet</li> <li>* Cabinet Back Panel Pre-drilled for drawer glide installation</li> </ul>
CBKADWR24	77.00	
CBKADWR30	82.00	

Unfinished	
Model	
N/A	

# Wood Characteristics and Product Care

## Wood Characteristics

**BEECH:** Beech is a strong hardwood resistant to scratching and denting at a higher degree when compared to other softer species. Similar to Maple, Beech has a fine, tight grain and even texture which allows for better and easier staining and finishing.

**HICKORY:** Hickory is a heavy hardwood which when finished has a warm, appealing appearance. Distinctive color streaks, combined with knots and other noticeable characteristics, make for a rustic appearance. While some parts may be clear and others extremely rustic, the characteristics of hickory are an inherent part of its charm and are considered to be a desirable part of the total look.

**MAPLE:** Maple is a hardwood that inherently has a characteristic known as "birdseye" or "fiddleback" pattern in the wood. When finished, it can have the appearance of a varied sheen, a splotchy appearance, or satiny look. This is the beauty of real maple and not a defect. In most cases it takes on a very pleasant look. Mineral streaks are also common and may appear darker when stained.

**OAK:** Oak is an open-grained hardwood with varying patterns ranging from straight grain to wide arcs. When stained, there will be a noticeable difference in the color shades between the open and closed grain areas of the wood. Wood can range from pink to a reddish brown.

**WOOD:** Wood species in all finishes will exhibit color changes when exposed to different types of light and environments over time. Such color changes are expected in Continental Cabinets brand cabinetry and are not defects. Graining differences, mineral streaks and color variations are expected in wood cabinetry. Continental Cabinets door styles often exhibit these characteristics and such graining differences, mineral streaks and color variations are not defects.

## Care and Cleaning

- For normal spills, a damp cloth is sufficient. Remember to dry the surface immediately.
- Thermofoil doors can be cleaned with most general purpose household cleaners.
- Wood doors can be cleaned with most general purpose household cleaners and polished with most furniture care products, not containing wax, petroleum solvents or silicones.
- Do not use caustic agents and/or abrasive scrubbers, or oven cleaners.
- Nicks and dings can be repaired with touch-up kits.
- For stains that persist, flakes of Ivory soap diluted in warm water may be used. Remember to dry the surface immediately.
- Cabinets can be cleaned with a damp sponge or cloth using soapy water, or most general purpose household cleaners. Do not use any abrasive cleaner or scrubbers.
- Do not let liquids stay on the surface for a long period of time. The surface is water resistant, not waterproof.

# Warranty Information

## Warranty Details

- Finished Cabinetry - Limited Lifetime Warranty applies
- Unfinished Cabinetry - 1 Year Limited Warranty applies

Warranty Coverage: American Woodmark Corporation. ("AWC") warrants its parts and products to be free of substantial defects in materials and workmanship from the original date of purchase under normal home use. This warranty is offered only to the original consumer purchaser and may not be transferred.

What AWC Will Do Under The Warranty: During the warranty period, AWC will repair or replace any part or product that proves to have substantial defects in materials or workmanship, or AWC will provide an equivalent replacement product. In keeping with our policy of continuous product improvement, AWC reserves the right to change specifications in design and materials without notice and with no obligation to retrofit products we previously manufactured.

How State Law Applies: This warranty gives you specific legal rights, and you may also have other rights that vary from state to state.

Implied Warranties: AWC disclaims any implied warranty of merchantability, and there are no warranties that extend beyond the descriptions on the face hereof to the extent that such disclaimer is not valid under applicable law, any implied warranty shall be coextensive in duration with this warranty.

Wood Characteristics, Aging and Printing Limitations: Because of the varying natural characteristics of wood and the effects of aging, product shown in displays and/or printed materials will not be an exact match to new cabinetry you will receive. Depending on the wood characteristics, the age of a sample and the environment of the showroom, samples will show some degree of variation from new product. In addition, you should not expect all doors, drawer fronts, trim or molding to match exactly in either finish or grain. Variation in wood is normal and unavoidable. In addition, it is not possible to exactly match our colors in printed materials. Therefore, you should view the actual samples when making your color selection.

What This Warranty Does Not Cover: This warranty does not cover any problems or damage which result from improper transportation, improper installation, mishandling, misuse, abuse, neglect, abnormal use, commercial use, improper maintenance, non-AWC repairs, accidents, or acts of God, such as hurricanes, fire, earthquakes or floods. This warranty and any applicable implied warranties do not cover incidental or consequential damages arising from any defects in the product, such as labor charges for installation or removal of the product or any associated products. This warranty does not cover defects or damage caused by normal wear & tear, alterations, environmental conditions, humidity absorption, or mold. In addition, variations in wood grain finish color, aging or other natural wood and stain characteristics are not considered defects and are not covered by this warranty. Some states do not allow the exclusion or limitation of incidental or consequential damages, so the above limitation or exclusion may not apply to you.

How to Obtain Warranty Service: If you need replacement parts or would like to make a warranty claim, please contact our Customer Service Representative by mail or telephone Customer Service. All warranty claims must include the model number of the product, copy of the original receipt and the nature of the problem. In addition, AWC may at its discretion require inspection of the installation site or authorize the prepaid return of the claimed defective part. Merchandise not pre-approved for return will not be accepted and the associated claim not accepted. Products should be examined for defects prior to installation. This warranty also does not cover labor charges for installation or removal of the product or any associated products. If upon inspection you find our product has a damaged or missing part, it may not be necessary to return the unit to the Dealer of purchase.



HAMILTON  
Café

# Continental

CABINETS

GOOD LOOKS AT A GREAT PRICE

[www.ContinentalCabinetry.com](http://www.ContinentalCabinetry.com) • 800-229-5840

CBNBK0122